



# CANDELA®



**DERMA LASER**  
Your Laser Service Partner

## Gentle Max Pro



### System Specifications

Laser Type	Nd:YAG	Alexandrite
Wavelength	1064 nm	755 nm
Repetition	Up to 10 Hz	Up to 10 Hz
Max Delivered Energy	80 joules (J)	53 joules (J)
Pulse Duration	0.250-100 ms	
Spot Sizes	6 mm, 8 mm, 10 mm, 12 mm, 15 mm, 18 mm	
$\lambda^2$ Specialty Delivery System Option Spot Sizes	1.5 mm, 3 mm 20-22-24	
Beam Delivery	Lens-coupled optical fiber with handpiece	
Pulse Control	Finger switch, foot switch	
Dimensions	107 cm H x 46 cm W x 69 cm D (42" x 18" x 27")	
Weight	118 kg (260 lbs)	
Electrical	200-240 VAC, 50/60 Hz, 30A, 4600 VA single phase	

#### Faster

An enhanced 2 Hz repetition rate enables you to treat more patients, faster.

#### Dual Wavelength Delivery System

Single Lightweight ergonomic handpiece delivering both 755 nm and 1064 nm wavelengths for ultimate treatment convenience.

#### Multiple Spot Sizes

6, 8, 10, 12, 15, and 18 mm spot sizes are anatomically appropriate and offer greater fluence delivery capabilities.

#### Optional Spot Size

20, 22, 24 mm  
1.5, 3 mm spot.

#### $\lambda^2$ Specialty Delivery System™

GentleMax Pro also offers a dual wavelength Specialty Delivery System option with 1.5 / 3 mm spots for vascular and pigmented lesions.

#### Enhanced Intuitive Touch Screen

Redesigned to help you more easily select wavelength and optimal treatment parameters.

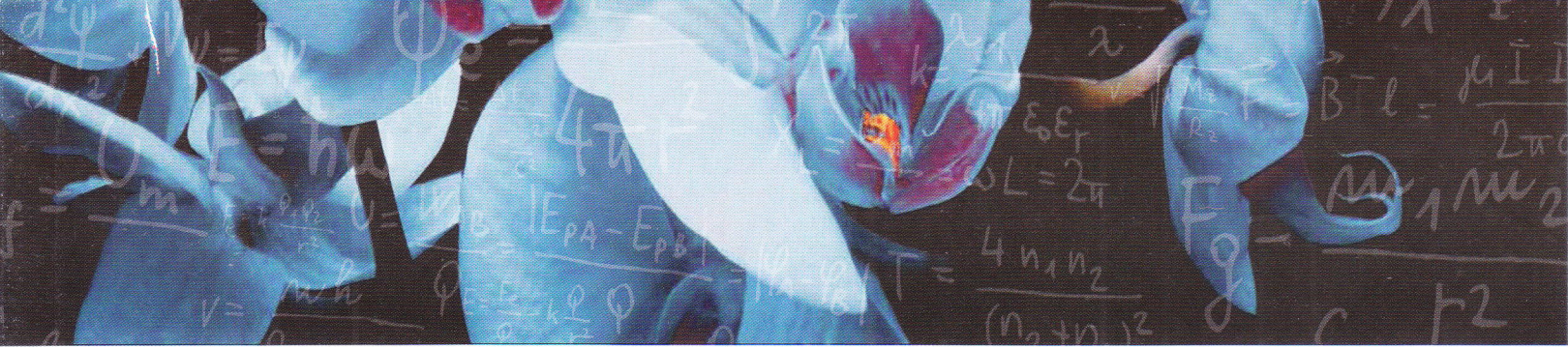
#### Variable Pulse Duration

From microseconds to milliseconds variable pulse durations provide improved results and safety when treating pigmented and vascular lesions on various skin types.

#### DCD or Air Cooling—It's Your Choice

The cryogen-based Dynamic Cooling Device (DCD™) and the Air Cooling Compatible (ACC™) systems both protect the epidermis and save time. DCD cooling scales with fluence provide more consistent, operator independent epidermal protection.

For Sale & Service Contact 0321-9455593

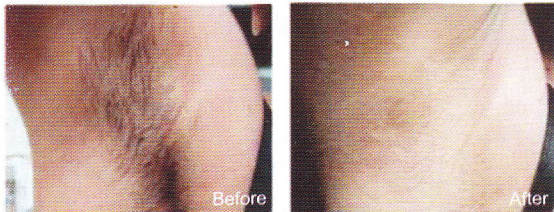


## Clinical Results

### Hair Removal



Photos: Kathleen P Hutton M.D.



Photos: Kathleen P Hutton M.D.

### Pseudofolliculitis Barbae (PFB)



Photos: Olga Zerpa, M.D.

### Lentigines / Brown Spots



Photos: Jonathan Crane, D.O.

### Leg Veins



Photos: EVictor Ross, M.D.

### Facial Veins



Photos: Mitch Chasin, M.D.

### GentleMax Pro Indications

- Hair Reduction
- Rosacea
- Pigmented Lesions
- Leg Veins
- Hemangiomas
- Beard Bumps (PFB)
- Facial & Spider Veins
- Diffuse Redness