

CANDELA®

Gentle YAG Pro U



DERMA LASER  
Your Laser Service Partner

System Specifications

Laser Type	Nd:YAG
Wavelength	1064 nm
Repetition	Up to 10 Hz
Max Delivered Energy	80 joules (J)
Pulse Duration	0.250-100 ms
Spot Sizes	6 mm, 8 mm, 10 mm, 12 mm, 15 mm, 18 mm
Optional <sup>2</sup> Specialty Delivery System Option Spot Sizes	1.5 mm, 3 mm, 3 x 10 mm 20-22-24
Beam Delivery	Lens-coupled optical fiber with handpiece
Pulse Control	Finger switch, foot switch
Dimensions	107 cm H x 46 cm W x 69 cm D (42" x 18" x 27")
Weight	118 kg (260 lbs)
Electrical	200-240 VAC, 50-60 Hz, 20-30 A, 4600 VA single phase (30 A required for highest repetition rates)

Faster

An enhanced 2 Hz repetition rate enables you to treat more patients, faster.

Choice of Delivery Systems

Choose from multiple ergonomically enhanced hand pieces and lightweight delivery systems to minimize operator fatigue and improve treatment convenience.

Multiple Spot Sizes

6, 8, 10, 12, 15 and 18 mm spot sizes give the GentleYAG Pro-U anatomically appropriate spot sizes and greater fluence delivery capabilities.

λ<sup>2</sup> Specialty Delivery System™

GentleYAG Pro-U also offers a dual wavelength Specialty Delivery System option with 1.5 / 3 / 3x10 mm spots ideal for treating pigmented and vascular lesions.

Intuitive Touch Screen

Select the correct treatment parameters quickly and easily.

Variable Pulse Duration

For even greater flexibility in treating vascular and multiple epidermal pigmented lesions.

DCD or Air Cooling—It's Your Choice

Choose from either the Air Cooling Compatible™ (ACC™) or the cryogen-based Dynamic Cooling Device™ (DCD™) cooling system, which saves time, is operator independent, scales with fluence and provides consistent protection of the epidermis.

Elegant, Smart Design

Sleek, modern lines, a small footprint and lightweight for increased mobility. Deliver fast, effective and comfortable treatments in virtually any environment.

Sapphire Protective Windows

Protects system optics, ensuring long lasting performance and the ability to withstand high repetition rates and high energy output.

For Sale & Service Contact 0321-9455593



## GentleYAG Pro-U Versatility

Practitioners around the world treat more than unwanted hair with GentleYAG Pro-U including:

- Hair Removal on all skin and hair types (ideal for Fitzpatrick skin types IV - V)
- Spider veins
- Telangiectasia and telangiectatic matting on the face and legs

## GentleYAG Pro-U Upgradable Applications

Convert your system to the full GentleMax Pro configuration as your practice expands to serve a broader spectrum of hair removal and other clinical indications such as:

- Removal of epidermal pigmented lesions
  - Sun-damaged skin
  - Age spots
  - Freckles
- Treatment of vascular anomalies

## Clinical Results

### Hair Removal



Photos courtesy of Faye Jenkins, RN

### Pseudofolliculitis Barbae (PFB)



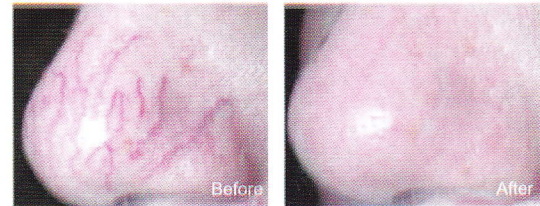
Photos courtesy of Olga Zerpa, M.D.

### Leg Veins



Photos courtesy of Marguerite Germain, M.D.

### Vascular Lesions



Photos courtesy of StephenW Eubanks, M.D.