



**YOU WERE BORN
BEAUTIFUL.**

WE MAKE IT LAST.

MADE IN KOREA

www.korupharma.com

Lipo Lax⁺

Lipo Lax⁺ is a lipolytic, which is based on the process of lipolysis - breaking down fats or lipids in the body to remove unwanted fat deposits

Treatment areas	Dosage	Depth of injection (mm)	Injection	Distance between injections
Upper legs / legs / buttocks	15–20 ml*	6–13/30G6-13	0,1–0,3 ml	2 cm
Chin region	4–5 ml*	3–4/32G4	0,1–0,3 ml	2 cm
Belly / waist	10–15 ml*	6–13/30G6-13	0,1–0,3 ml	2 cm

*to be determined on an individual basis, depending on the level of fat and other physiological features

INSTRUCTIONS

- 1 Pre-treat skin with an alcoholic lotion or chlorhexidine
- 2 Inject product into the area where the lipolysis processes should be activated
- 3 Finish treatment with an antiseptic
- 4 Additional injections shall be made into each area with a time interval of 1 week

Benefits:

- Elimination of fat deposits of 2–18 cm over 3 treatment sessions
- Painless procedure
- Convenient use
- Natural composition
- Active ingredient: PPC
- Immediate and prolonged effect
- Elimination of excess fat in places that are hard to lose with physical exercise
- Suitable for patients of any age (18+)

Indications:

- Excessive weight and localization of fat deposits under the skin
- Destabilization of lipid exchange
- Cellulite

Effects:

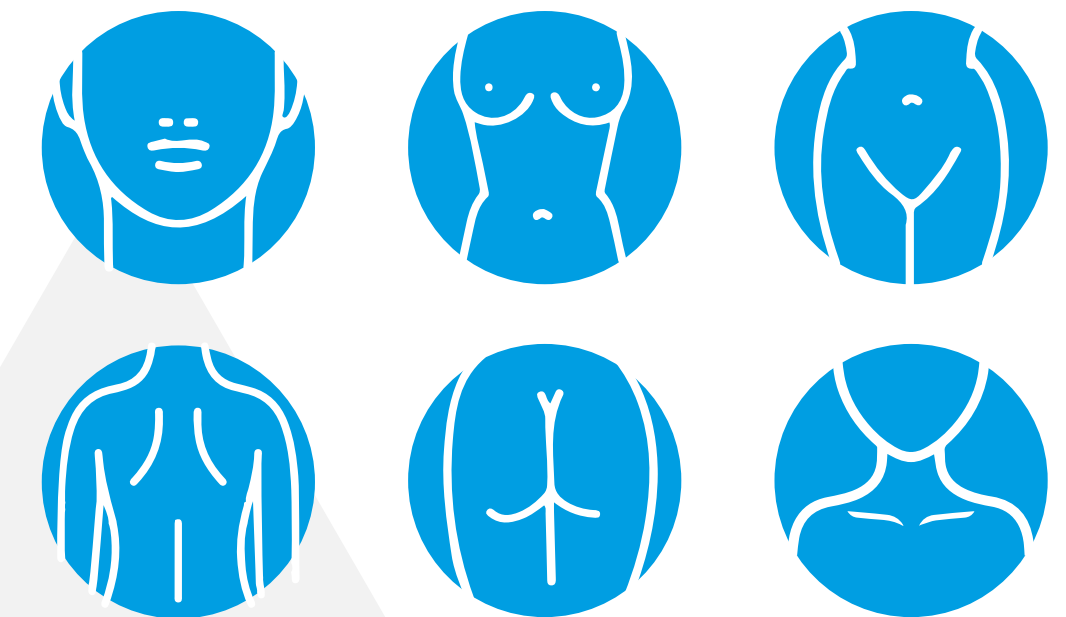
- Absolute elimination of local fat deposits, cellulite and skin laxity
- Normalization of skin plasticity
- Smooths and firms skin

Ingredients:

- Phosphatidylcholine (PPC) — 1,000 mg
- Deoxycholate — 5 mg
- PPC purification — 99.8%
- L-carnitine — 200 mg

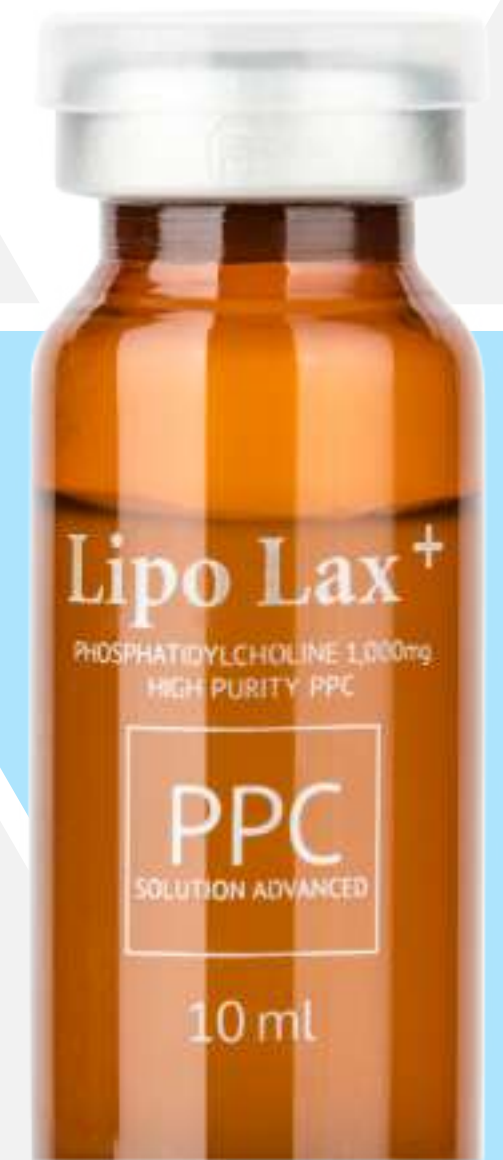
Elimination of fat deposits in the following areas:

abdomen, thighs, under the chin or upper neck, flanks, under the armpit, back, buttocks and under the buttocks



Package
10 bottles x 10 ml

Storage
Store at 12°C to 28°C



LIPO LAX VL

This new exclusive formula activates the natural lipid metabolism and triggers intensive lipolysis processes. Lipo Lax LV not only removes local fat deposits, but also strengthens the dermal framework, tightens the skin, eliminates age-related ptosis and enhances the facial contours.

By eliminating a surplus of subcutaneous fat, skin rejuvenation and lifting can take place simultaneously, which will prevent sagging and the appearance of folds and wrinkles.

Indications:

- Any face defects associated with excess fat
- Flabby skin
- Formation of second chin
- Loss of facial contour



Benefits:

- Removes local fat deposits and redefining facial contours
- Activates dermal fibroblasts functions and enhancement of collagen
- Improves skin tone and elasticity while smoothing, clarifying, hydrating, and softening the skin
- Lifts and smoothes the skin, reducing the depth of wrinkles and folds
- Stimulates cellular renewal and skin rejuvenation

Lipo Lax VL – Solution for local fat deposits in the face

Type of needle	30G, 33G, 32G/4, 33G/4, 33G/4
Dosage and administration	<ul style="list-style-type: none"> • A single treatment might consist of 5ml injections, spaced 1cm apart. • Depth of injection: 0.4–0.6 cm. • One procedure in 10–14 days • 0.3 ml each puncture
Treatment areas	cheeks, ears, chin, nasolabial folds
Course of procedures	2-5 sessions

Storage:

Store at room temperature, avoid direct sunlight. Leftover product must be sealed and refrigerated at 1 to 5 °C.

Package: 10 bottles x 10 ml



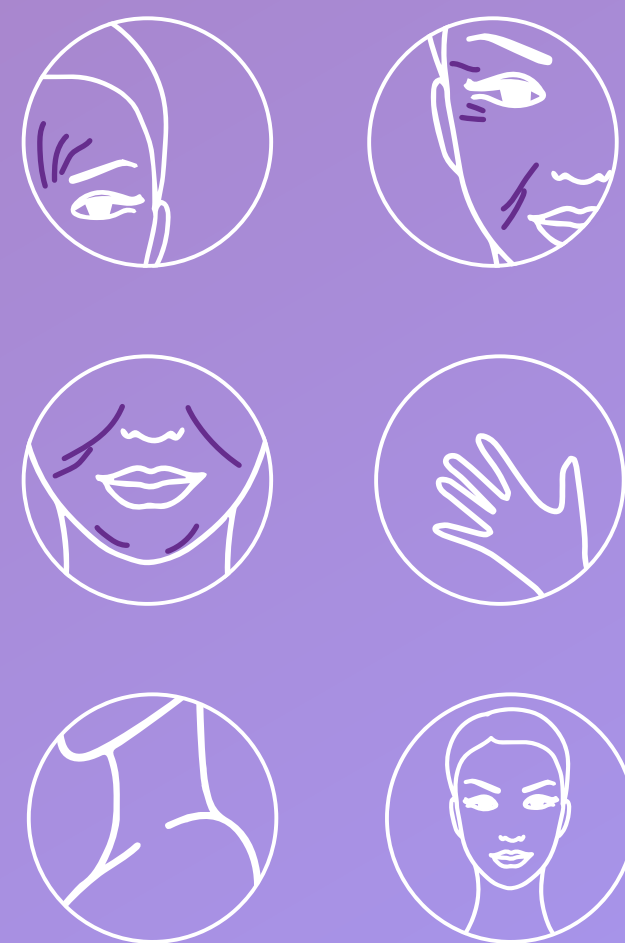
Instructions:

1. Wash the face and make sure completely free of makeup. Rinse clean.
2. Apply an antiseptic solution to the area to be treated
3. This procedure can be done under local anesthesia if necessary (apply a cooling pain-free gel to minimize pain)
4. Slowly and carefully inject the product into the subcutaneous layer of soft tissue where the excessive fat is to be removed
5. After injection, the patient is recommended to lie down for 30 minutes to ensure that the product spreads out evenly. During this waiting period, the physician should monitor the patient's condition
6. Patient is recommended to drink mineral water, which will accelerate the removal of waste products

REVERSAL

A hybrid filler created on the base of polylactic (Poly D, L-lactide) and hyaluronic acid. The main ingredient — polylactic acid is a biodegradable substance. Fully metabolized several months after injection without residual reactions. Polylactic acid (PLA) stimulates the synthesis of the patients collagen in their skin cells, sending signals to the body about regeneration and activates healing and rejuvenation. At the time of dissolution at the site of the drug the newly formed collagen remains, prolonging the effect of the filler for a period of 1 year.

Instant filling of skin defects with hyaluronic acid, along with a powerful activation of collagen production, makes the effect of Reversal injections instant, effective and prolonged.



REVERSAL — the revolutionary contour volume filler of a new generation. It is used in cosmetology in order to fill the missing volume of tissue and its sculptural contouring.

Benefits

- Effectively launches the production of new collagen fibers and activates tissue regeneration;
- Accurately and evenly fills the resulting irregularities in the skin's relief;
- Reconstructs the dermis, gives clarity to the contours of the face;
- Keeps skin toned;
- Has a reinforcing effect due to the presence of polylactic and hyaluronic acid in the filler;
- Restores normal nutrition and hydration of tissue;
- Result of the correction looks natural and facial expression of patient does not change.

The maximum effect can be achieved after completing required treatment sessions with Reversal filler, which consists of 2–3 sessions with an interval of 1–2 months.



Method of use:

1. Prepare 9ml suspension 30 minutes before the procedure: Reversal vial and 7 ml sterile water (SWFI). If necessary add 2 ml of lidocaine 0.2%.
 2. Mix for 3 minutes until solution is smooth. Leave the solution for 5 minutes and mix again, check the condition of the product, the powder should be completely dissolved.
 3. Gather the required amount of solution with a needle with an 18G diameter. Also recommended to use an asterile needle or cannula with a diameter of 25G or 26G.
 4. Enter the solution in the subcutaneous layer of the dermis to enhance the lifting effect and compact subcutaneous tissue.
 5. The filler is inserted directly into the problem area, follow by gentle massage for uniform distribution of the filler under the skin.
- * Recommended injection volume — 1 ml for each site.

Reversal — an innovative formula with stabilized hyaluronic acid

Indications:

- Dry, thin skin with fine wrinkles;
- Loss of tissue volume, asymmetry;
- Wrinkles in the corners of the eyes;
- Wrinkles around the mouth;
- Nasolabial folds;
- Pre-jowl folds;

Effects:

- Recovery and giving missing tissue volume due to lipodystrophy or asymmetry;
- Correction of age-related tissue (hollow cheeks, temples and sagging skin);
- Elimination of wrinkles (eyebrow, frontal, periorbital, nasolabial, buccal and submental folds);
- Facial contouring, reinforcement of oval face;
- Alignment of skin texture, correction of tissue defects, scars and pits;
- Visual skin rejuvenation, eliminating sagging, restoration of elasticity and smoothness;
- Rejuvenation of the hands;
- Volumizing cheekbones;
- Chin correction;
- Improving the overall condition of the skin in the areas of the face, neck and neckline.

Storage conditions:

Store in a dry place inaccessible to sunlight, at temperatures not higher than 30 C.

Packaging:

1 vial / 200 mg

HAIR BLOOM HAIR FILLER

Koru Pharma presents a new product that improves scalp and hair condition, «HAIR BLOOM» Hair Filler.

A breakthrough hair growth stimulating active complex developed from 5 years of intensive research, it features a proprietary blend of peptides.

While most treatments suggest results you can look forward to, «HAIR BLOOM» Hair Filler delivers clinically proven results. In just 12 weeks, you'll achieve hair that is denser and thicker.

The unique technology of «HAIR BLOOM» Hair Filler ensures consistent release of active ingredients and peptides to the hair root with its sustained time-release technology. This assures a steady release rate of peptides is achievable in between treatments.

This allows the active complex to optimise scalp microcirculation and effectively induces hair growth by decongesting hair follicles, countering most causes of hair fall. It also corrects the condition of the scalp to reduce hair fall and encourage further hair growth.

Ingredients:

Hyaluronic Acid (0.7%), Keratin, Collagen, Protein, Octapeptide-7, SH-Oligopeptide-9, SH-Decapeptide-7, Bioten, Vitamin H, Coenzyme R, Vitamin B7

Storage:

Avoid direct sunlight and store at 2°C to 25°C.

Hair Bloom Hair Filler - New Patented Active Complex with Proven Results

Benefits

- Promotes blood circulation in the scalp
- Revitalizes hair follicles
- Stimulates hair growth
- Increases hair thickness
- Eliminates dry scalp combating problems including dandruff and dry hair
- Protects collagen from degrading
- Prolongs duration of hair transplants

Indications :

- Dry scalp
- Lack of blood circulation in the scalp
- Hair follicles requiring revitalization
- Weak hair growth
- Hair thinning
- Alopecia, Alopecia Areata

Instructions:

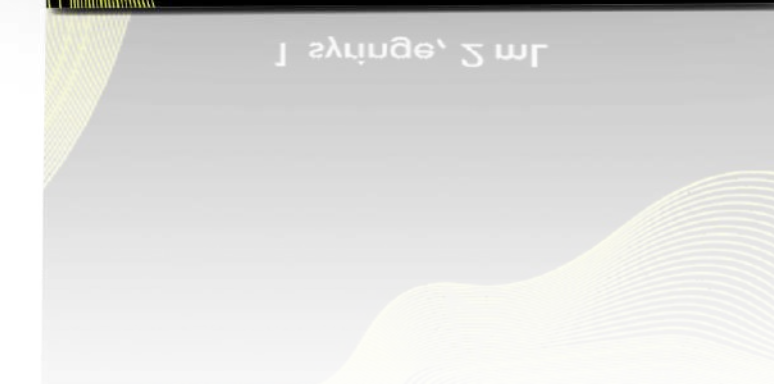
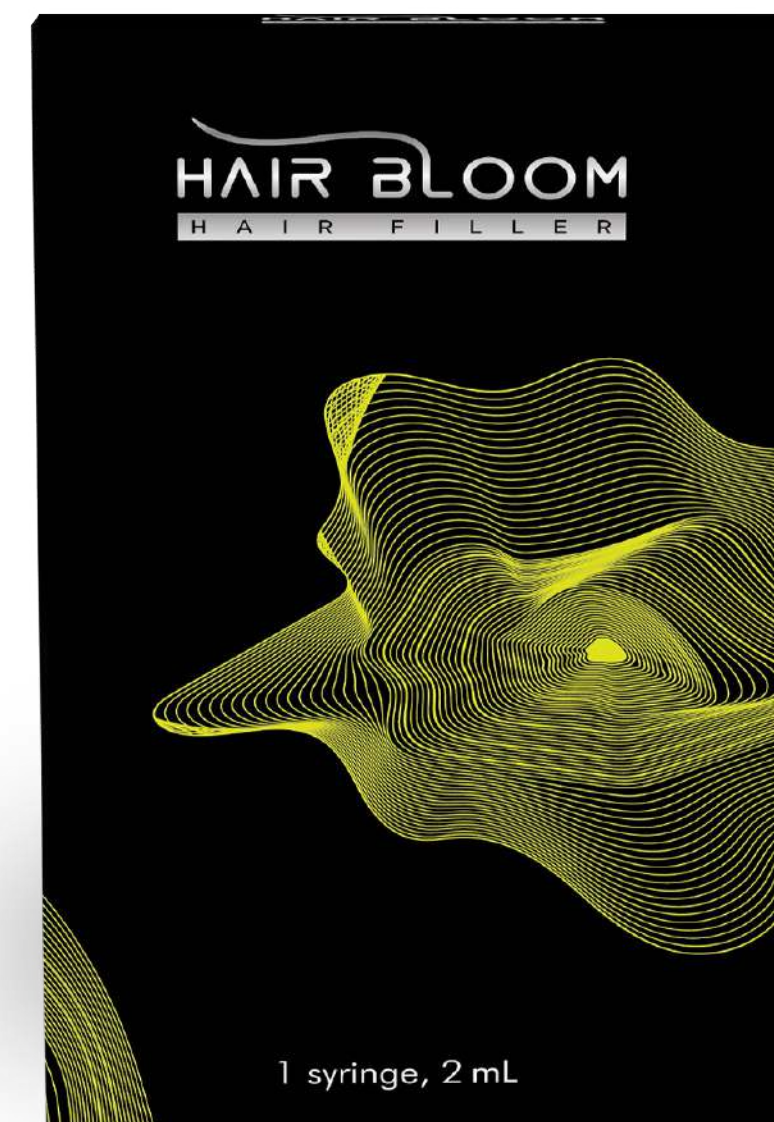
1. Sterilize the scalp with an alcohol swab or other aseptic solution
 2. Apply topical anesthetic to the scalp area if required
 3. After 30 minutes, clean the applied cream from the area. Then, sterilize with an alcohol swab or other aseptic solution
- Injection technique: point injection, serial puncture/intradermal injection.
 Injection point: 0.2-0.3cm / 1.0cm per line
 Injection: 0.02-0.05ml per point

Treatment:

Full treatment is a 4-8-week program
 1 session every 2 weeks. Repeat the course after 5-6 months (maintenance course)

Packaging:

1x Prefilled syringe (2 ml)



FILLERS

MESOHEAL BODY HA FILLER

MESOHEAL BODY HA FILLER restores volume to the body, in areas like the breasts, lower legs and buttocks. It is also efficient in combating cellulite and uneven skin surface due to liposuction procedures.



The body has a certain type of hyaluronidase which breaks down and removes hyaluronic acid (HA). Mesoheal Body contains a 30% cross-linking HA that prevents the hyaluronidase from breaking down, which ensures a longer effect.

Ingredients:

Stabilized Hyaluronic Acid — 20 mg/ml

Storage:

Avoid direct sunlight and store at 2°C to 25°C.

New VOLUME in body contouring

Indications:

- Correction of breasts and asymmetrical buttocks
- Uneven skin surface, including cellulite
- Volume loss in buttocks
- Contour correction of genitals (enlargement of labia majora, penis)
- Subcutaneous tissue loss due to liposuction
- Funnel chest
- Asymmetric calves
- Soft tissue defects related to surgery and traumas

Instructions:

- This procedure requires local anesthesia
- Procedure takes 30 to 45 minutes
- Both before and after the procedure, a course of antibiotics may be assigned for preventing risks of infection
- Small perforation (approx. 2-3 mm) is made (e.g., on a fold line under each breast or under the buttocks) and the product is injected into the subcutaneous tissue above the muscle with the use of a thin cannula or large spinal needle
- In the case of breast modelling, the product is administered under the breast tissue so as to not affect breastfeeding
- Use cannula 16G - 18G

Benefits:

- Highly-purified, stabilized hyaluronic acid — 20 mg/cm³
- Smooths the skin and combats cellulite
- Small HA particles enable easy modelling of desired shape
- In contrast to other fillers, MESOHEAL BODY has 30% crosslinking that ensures filler's longer effect
- Compared to other fillers, MESOHEAL BODY has a higher viscosity to prevent deformation, creates volume and longer duration
- Possibility "to try" larger breasts or buttocks (before using implants)
- General anesthesia is not required
- No incisions and no scars
- Quick recovery period (compared to plastic surgery)

Package
1 Vial/50 ml



AVALON

Koru Pharma offers a great variety of Avalon fillers for filling wrinkles: Avalon Fine, Avalon Vital and Avalon Ultra, which are made of a non-animal origin stabilized hyaluronic acid.

With a wide range of fillers, we aim to satisfy the wishes of numerous types of clients. Avalon is an ideal solution for most common procedures of mid-depth wrinkle correction. The results will last for 12–18 months, depending on the patient’s skin condition.

Benefits of Avalon Fine, Avalon Vital and Avalon Ultra:

- Easy correction of wrinkles of mid depth
- Absolutely safe for use in the body
- No edema or inflammations
- Deep moisturizing of the skin
- Normalization of body fluids
- Improvement of complexion
- Suitable for patients with sensitive skin
- No migration and no lumps



AVALON fillers — an optimal combination of viscosity and elasticity

Product	AVALON Fine 18	AVALON Vital 20	AVALON Ultra 24
Cross-linking	BDDE	BDDE	BDDE
Hyaluronic acid concentration	18 mg/ml	20 mg/ml	24 mg/ml
Concentration of lidocaine	x	x	3 mg/ml
Cross-linking level	●	●●	●●●
Molecular weight	1,000,000 g/mole	1,000,000 g/mole	1,000,000 g/mole
pH	≈ 7.0	≈ 7.0	≈ 7.0
Elasticity modulus	50–100 Pa	50–100 Pa	150–250 Pa
Needle size	2x30 G 1/2	2x27 G 1/2	2x27 G 1/2
Volume of syringe	1.0 ml	1.0 ml	1.0 ml
Depth of injection	Intradermally (surface layer of dermis)	Intradermally (middle or deep layer of dermis)	Deep layer of dermis, Subperiosteal
Duration (in months)	9	12	18
Indications	<ul style="list-style-type: none"> • Thin dermal wrinkles • Perioral wrinkles • Volume loss in temporal, forehead and glabellar-region • Class I-II Wrinkles • Horizontal neck wrinkles 	<ul style="list-style-type: none"> • Wrinkles of mid-depth • Nasolabial folds • Marionette folds • Corners of lips down-turned 	<ul style="list-style-type: none"> • Deep wrinkles (rhytides) • Volume loss in lips, cheeks, chin • Undefined facial contours
Effects	<ul style="list-style-type: none"> • Precise correction of the thinnest wrinkles • Correction of wrinkles on the back of the hand 	<ul style="list-style-type: none"> • Correction of middle wrinkles and folds • Restoring volume of the lips, soft tissue in the neck, temporal and malar zones • Correction of wrinkles on wrists • Correction of earlobes 	<ul style="list-style-type: none"> • Restoring volume and filling in deep wrinkles • Correction of facial contours
Package	1 Syringe, 2 Needles	1 Syringe, 2 Needles	1 Syringe, 2 Needles

Storage: Avoid direct sunlight and store at 2°C to 25°C.

AVALON PLUS

The AVALON family of non-surgical fillers contains highly-purified hyaluronic acid (20 mg/ml) and lidocaine (0.3%) – for anesthetic effects. In order to offer the most comfortable and painless procedure AVALON Plus is administered with an ultrathin needle. In combination with the level of elasticity of hyaluronic acid, this parameter ensures easy usage and a high level of patient satisfaction. Ultrathin needles reduce the level of skin damage. In addition, discomfort related to the skin perforation by a needle is also minimized.

Each product targets different concerns for the face, neck and hands. The viscous filler, AVALON ULTRA Plus, is for thick skin and deep wrinkles and it is also efficient in restoring volume. The mid-viscosity filler, AVALON VITAL Plus, corrects significant wrinkles. The low-viscosity filler, AVALON FINE Plus, is for correcting thin and very fine wrinkles.

Benefits:

- Painless and safe procedure
- Long-term effect
- Hypoallergenic
- Short recovery period
- Fillers contain an anesthetic
- Optimal concentration of HA
- Even distribution of product under the skin



AVALON PLUS Filler — provides great results and a painless procedure

Product	AVALON Fine Plus	AVALON Vital Plus	AVALON Ultra Plus
Cross-linking	BDDE	BDDE	BDDE
Hyaluronic acid concentration	20 mg/ml	20 mg/ml	20 mg/ml
Concentration of lidocaine	3 mg/ml	3 mg/ml	3 mg/ml
Cross-linking level	●	●●	●●●
Molecular weight	1,000,000 g/mole	1,000,000 g/mole	1,000,000 g/mole
pH	≈ 7.0	≈ 7.0	≈ 7.0
Elasticity modulus	79 Pa	105 Pa	220 Pa
Needle size	1x27 G 1/2, 1x30 G 1/2	2x27 G 1/2	1x25 G 1/2, 1x27 G 1/2
Volume of syringe	1.0 ml	1.0 ml	1.0 ml
Depth of injection	Intradermally (surface layer of dermis)	Intradermally (middle or deep layer of dermis)	Deep layer of dermis, Subperiosteal
Duration (in months)	9	12	18
Indications	<ul style="list-style-type: none"> • Dermal wrinkles • Crow's feet • Frontal wrinkles • Corners of the mouth down-turned • Wrinkles in the neck and decollete area • Volume loss of lips 	<ul style="list-style-type: none"> • Mid-depth wrinkles and folds • Nasolabial folds • Corners of the mouth down-turned • Volume loss in the soft tissues of neck, temporal and malar zones • Correction of ear-lobes 	<ul style="list-style-type: none"> • Deep wrinkles and folds • Irregular chin shape or jaw angle
Effects	<ul style="list-style-type: none"> • Correction of thin and mid-depth wrinkles and minimal esthetic defects 	<ul style="list-style-type: none"> • Correction of middle degree wrinkles and folds, especially in the lower third of the face 	<ul style="list-style-type: none"> • Intensive filling of deep wrinkles and restoring volume • Restores volume in the malar and chin regions • Correction of facial contours
Package	1 Syringe, 2 Needles	1 Syringe, 2 Needles	1 Syringe, 2 Needles

Storage: Avoid direct sunlight and store at 2°C to 25°C.

CRYSTAL

A new line of premium fillers that is created using NASHA technology – an advanced process of purifying hyaluronic acid (HA) without using any animal-sourced materials, ensuring that the risk of impurities is close to zero. The fillers also contain lidocaine for reducing pain and discomfort. CRYSTAL fillers can correct wrinkles, restore volume to the face, and improve the skin’s elasticity.

Benefits:

- Use of high-purified Hyaluronic Acid (non-animal origin)
- No bacterial endotoxins
- High safety due to low concentrations of residual cross-linking agent
- Low risk of scars due to low levels of protein left in the HA gel
- Long-term effect (the duration is longer by 30%, compared to other fillers)
- No migration and no lumps
- Correction of wrinkles, fills desired area with volume and moisturizes skin



Storage:

Avoid direct sunlight and store at 2°C to 25°C.

Premium fillers: CRYSTAL Lite, CRYSTAL Deep and CRYSTAL Ultra

Product	CRYSTAL Lite	CRYSTAL Deep	CRYSTAL Ultra
Cross-linking	BDDE	BDDE	BDDE
Hyaluronic acid concentration	20 mg/ml	20 mg/ml	20 mg/ml
Lidocaine concentration	3 mg/ml	3 mg/ml	3 mg/ml
Cross-linking level	●	●●	●●●
Molecular weight	1,000,000 g/mole	1,000,000 g/mole	1,000,000 g/mole
pH	≈ 7.0	≈ 7.0	≈ 7.0
Elasticity modulus	79 Pa	105 Pa	220 Pa
Needle size	1x27 G 1/2, 1x30 G 1/2	2x27 G 1/2	1x25 G 1/2, 1x27 G 1/2
Volume of syringe	1.0 ml	1.0 ml	1.0 ml
Depth of injection	Intradermally (surface or middle layer of dermis)	Intradermally (middle or deep layer of dermis)	Deep layer of dermis, Subperiosteal
Duration	From 6 to 12 months, depending on the injection method, treatment area and the patient’s features.	From 9 to 12 months, depending on the injection method, treatment area and the patient’s features.	Due to the high cross-linking level, CRYSTAL Ultra can stay in the tissue for a period of up to 18 months, depending on the injection method, treatment area and the patient’s features.
Indications	The most delicate of the three fillers. It is for eliminating irregularities of the skin, correcting small wrinkles (I and II degrees) and correcting atrophic scars. It can also be used for contouring lips.	Corrects esthetic defects and restores volume in the soft cheek tissue, temporal and malar regions. It is used for correcting deep folds, restoring volume in cheek bones, chin or earlobes and lips.	The most intensive filler in the CRYSTAL line. It perfectly eliminates deep wrinkles and folds (IV-V degrees), restores the volume of soft tissue in the malar, temporal and nasal regions, chin and facial contour.
Package	1 Syringe, 2 Needles	1 Syringe, 2 Needles	1 Syringe, 2 Needles

CRYSTAL HYDRO PDRN

Providing skin rejuvenation and intense hydration for a healthier and more radiant complexion Crystal Hydro PDRN improves skin elasticity and strengthens natural skin barriers.

PDRN (Polydeoxyribonucleotide) PDRN is DNA which is obtained from Salmonidae fish and a regenerative activity material existing within the living body. This creates an act of tissue formation and cell division as a regenerative ingredient and helps improve skin within a short-time period.

Hyaluronic acid is naturally present in the human body, as a component of the cell. With age, its content decreases and, as a result, the skin loses elasticity and the number of wrinkles increases. For dehydrated skin and skin that is losing elasticity delivery of hyaluronic acid directly to the subcutaneous layer is the most effective way to experience an immediate effect.

Crystal Hydro PDRN with the combination of PDRN and Hyaluronic Acid is the most powerful anti-aging solution which supplements moisture, improving skin tone and elasticity.

Indications:

- Age-related skin changes, dry skin;
- Weak skin barrier;
- Pigmentation;
- Expressed worry lines;
- Fading skin of the face and neck;
- Clinical manifestations of acne;
- Skin with signs of photo and chrono-aging

Crystal Hydro PDRN — Moisturizing And Firming The Skin

Instructions:

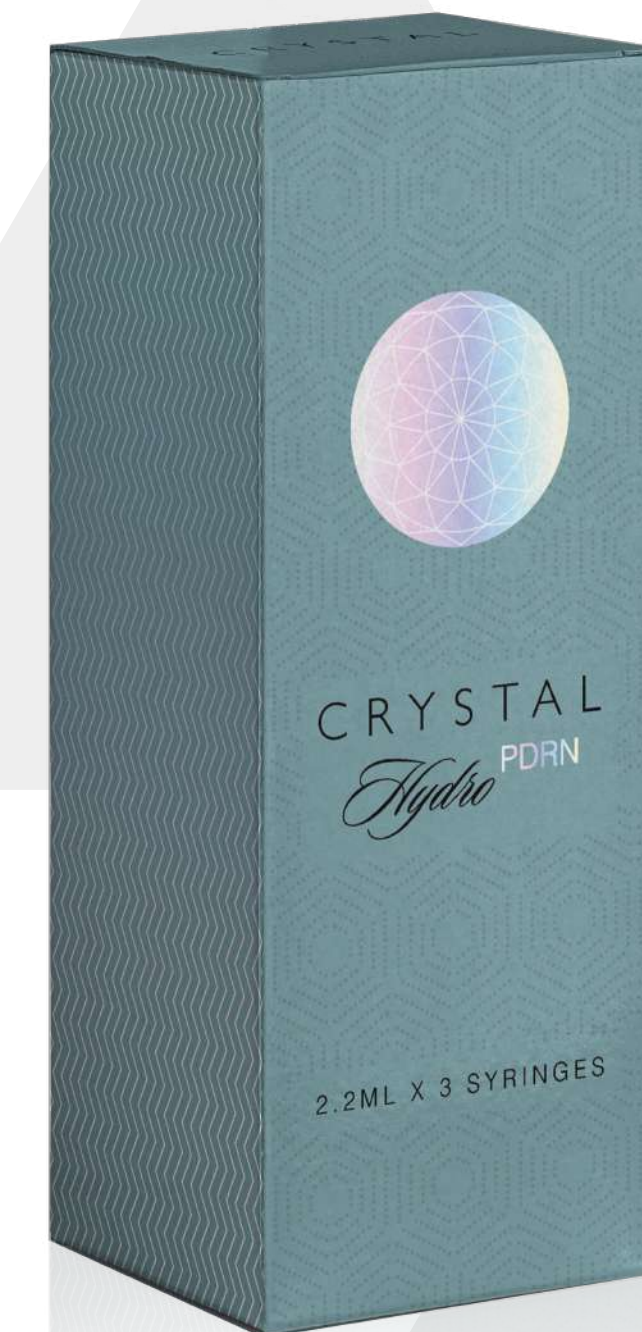
1. After the patient has thoroughly washed the treatment area with soap and water, the area should be swabbed with alcohol or other antiseptic.
2. Crystal Hydro PDRN is administered using a 32-34G needle. A linear threading technique, serial puncture injections or a combination of the two have been used to achieve optimal results. If this product is injected too superficially this may result in visible lumps and/or discoloration. Crystal Hydro PDRN should be injected intradermally into a tissue.
3. If the patient needs further treatment, the same procedure should be repeated until a satisfactory result is obtained. With patients who have localized swelling the degree of correction is sometimes difficult to judge at the time of treatment. In these cases, it is better to invite the patient to a touch-up session after 1-2 weeks.
4. After the initial treatment (from 1 to 2 weeks later), an additional treatment of this product maybe necessary to achieve the desired level of correction.

Effects:

- Promotes cell regeneration;
- Renews radiance and smoothness of skin tone;
- Improves skin elasticity;
- Balances inner skin layer;
- Replenishes moisture;
- Provides anti-aging effect

Ingredients:

Hyaluronic Acid 20 mg/ml
Niacinamide 1 mg/ml
Polydeoxyribonucleotide 2 mg/ml
Sodium Chloride 7.6 mg/ml
Sodium phosphate monobasic dihydrate 0.78 mg/ml
Purified Water qs 1ml



Package

2.2ml x 3 syringes

Storage

Avoid direct sunlight
and store at 1°C to 30°C.

CRYSTAL MESO PN

An absolutely new conception of prolonged biorevitalization presented as a mesotherapy CRYSTAL Meso PN, for restoration and enhancement of skin regeneration in delicate areas (orbital, perioral, neck, decollete), with concentration of PDRN* — 2 mg / ml.

**Polydeoxyribonucleotide (PDRN) is a natural donor of substrates for the synthesis of its own DNA molecules, stimulates the synthesis of necessary proteins and increases the reparative potential of the skin.*

Koru Pharma uses only high-quality ingredients. The composition of CRYSTAL Meso PN includes extract of deoxyribonucleic acid (DNA) extracted from the milt of male salmon, which was thoroughly purified and depolymerized. This processing technology guarantees absolute safety in the use of DNA injections.

CRYSTAL Meso PN stimulates the regeneration and healing of damaged and aging skin cells, strengthening their protective barrier, keeping the skin healthy and supple. This product has a powerful anti-aging effect, causing regeneration of the cell renewal process. Thanks to active ingredients and regeneration ability, CRYSTAL Meso PN is indispensable in the treatment of acne, as well as in post-acne procedures aimed at restoring the skin and giving it a smooth and healthy tone.

Product's advantages:

- Visible result after the first procedure;
- Use of highly purified DNA, that has undergone the process of depolymerization;
- Concentration of PDRN is 70% higher than in other products;
- Protects against UVB radiation and prevents the development of pigmentation.

CRYSTAL Meso PN — new generation of biorevitalizants

Recommended for:

- Stressed, tired skin;
- Atrophic scars, striae; flabbiness of the skin;
- Dysfunction of sebaceous glands;
- Shallow wrinkles and signs of photo aging of the skin;
- Dry skin and loss of elasticity;
- Increased pigmentation;
- Restoration of the skin after winter;
- Smoker's skin.

Application zones:

- Minor facial wrinkles
- Neck wrinkles
- Wrinkles on the back of the hand
- Under-eye area



Effect:

- Recovers damaged cells and stimulates repair process;
- Eliminates small wrinkles;
- Improves the elasticity of the skin;
- Restores microcirculation in tissue;
- Reduces the process of inflammatory manifestation of acne;
- Promotes narrowing of pores;
- Accelerates scar healing;
- Increases the metabolic activity of cells, preventing the formation of new wrinkles.



How to use and dosage

Depth of injection	Needle	Recommended course of treatment	Dose	Recommendations
0.3–0.4 cm (injection is made in the papillary dermis)	34G 33G	To achieve the best aesthetic results, may be administered in 4 treatments with an interval of 2-3 weeks. <i>It is possible to perform additional injections in 10–14 days, however, this interval can be increased or decreased depending on the skin condition.</i>	It is recommended to do injections in the volume of 0.05 ml every 0.5-2 cm, moving along the treatment zone.	It is recommended to apply moisturizing and regenerating cream to the skin after the procedure and to use SPF or sun block when going out.

Ingredients: Sodium Polynucleotide 2mg/ml

Packaging: 1 syringe/1 ml, 2 needles

Storage and transport conditions:

Avoid direct sunlight and store at 1° to 30°.

MESOHEAL DUAL

MESOHEAL DUAL is an absolutely natural product which contains highly-purified hyaluronic acid and lyophilized polylactide powder which stimulates collagen synthesis in the human body. Thanks to a unique technology, MESOHEAL DUAL stimulates a process of cell activation, enhances tissue regeneration and deep moisturizing that results in a visible refreshment of complexion and reduction of wrinkles.

Indications:

- Stripe-like atrophoderma
- Linear atrophy;
- Cicatrices and scars;
- Pigmented spots;
- Acne (Not in the exacerbation phase);
- Large-pored skin;
- Deep facial wrinkles;
- Wrinkles on hands and neck;
- Dark circles and edema under eyes;
- Nasolabial folds;
- General prevention and treatment of Skin aging, mesolifting;

Effects:

- MESOHEAL DUAL binds and locks in moisture, creates the so-called "water shell";
- Balanced moisturizing of epidermis;
- Strengthening of barrier properties of the skin;
- Formation of lipid layer which allows skin to lose less moisture and counters the effects of external negative factors much better;
- Dual effect of hyaluronic and lactic acids plays a role of natural filler which maintains good skin turgor;
- Anti-age effect;
- Regeneration: renewal of structural elements in derma and acceleration of skin renewal;
- Elimination of pigmented spots, refreshment and harmonization of complexion;
- Skin whitening due to peeling-off keratinized cells of epidermis
- Blocking of tyrosinase activity, a biocatalyst responsible for generation of skin pigment (melanin).

MESOHEAL DUAL is a unique innovative formula which substantially differs from other mesotherapy products existing in the market.

METHOD OF USE

In mesotherapy:

- Open the bottle with HA.
- Derive HA by means of a syringe.
- Add HA into the bottle with polylactide powder.
- Mix two elements, shake manually for 10 minutes (as an option, use the mixers Wortex designated for mixing samples in test glasses, bottles, small flasks).
- Derive the mixed solution.
- Use a needle or cannula of 30G/4mm for performing the procedure.

For the treatment of acne, scars, linear atrophy and neck-area wrinkles:

- Make the solution in accordance with the instructions.
- Use a needle or cannula for performing the procedure.
- Inject the solution into a site of ex-tension (into derma).
- Make injections once a month.
- Course of treatment: 2-3 sessions.

For correcting wrinkles on hands:

- Make the solution in accordance with the instructions.
- Use a needle or cannula of 21G 70 mm to perform the procedure.
- Make a puncture in the wrist.
- Inject the solution into derma groove between ex-tensor tendons.
- Make injections once a month.
- Course of treatment: 2-3 sessions.

Recommended dosage*, needle size and course of therapy:

- **For acne:** 1 pack for 1 procedure. The treatment should be made once a month until achieving the desired result. Use a needle 30G 4mm, or cannula 25G 50mm.
- **For linear atrophy:** 2-4 packs for 1 procedure. The treatment should be made once a month until achieving the desired result. Use a needle 30G 4mm, or cannula 25G 50mm.
- **For neck wrinkles:** 1-2 packs for 1 procedure. The treatment should be made once a month until achieving the desired result. Use a needle of 30G 3mm, or cannula 25G 50mm.
- **For hands:** 1 pack for each hand. The treatment shall be made once a month until achieving the desired result. Use a needle or cannula of 21G 70mm.
- **For facial mesotherapy:** 1 pack for 1 procedure. The treatment should be made once a month until achieving the desired result. Use a needle or cannula of 30G 4mm (the procedure may be also performed with the help of a meso-injector).

**The recommended dosage is approximate and may vary according to the patients' individual needs. For optimal results, a consultation with a physician is required.*

Package:

Hyaluronic acid gel (1 vial) – 5 cc
 Polylactide powder (1 vial) – 100 mg.

Storage and transportation:

Keep the container closed tightly in a dry, cool and properly ventilated place at the temperature from 1°C to 30°C.

moisturizing, rejuvenating, exfoliating and anti-inflammatory effects



MESOHEAL⁺

The main advantage of MESOHEAL⁺ is that it is made with a highly-purified Hyaluronic Acid (HA). Since the presence of protein in HA causes scarring and fibrosis, MESOHEAL⁺ goes through a rigorous three-phase purification process during manufacturing to ensure that the HA is pure. Thus, Mesoheal + is absolutely safe, ensures no risk of adverse effects or allergic reactions and provides the best esthetic effects.

TREATMENT COURSE SHOULD BE ASSIGNED BASED ON INDIVIDUAL NEEDS & DEPENDING ON THE PATIENT'S CURRENT STATE OF HEALTH.

Recommended course:

Basic treatment course is 6 procedures. Each procedure is to be made every 14 days, during the period of 3 months.

Package:

5 Syringes/2.5 ml

Storage:

Avoid direct sunlight and store at 2°C to 25°C.

MESOHEAL⁺ is an advanced and highly-efficient product for biorevitalization of the skin.

Indications:

- Age-related changes in the skin
- Skin dehydration
- Rugulose type of aging
- Visible Wrinkles
- Signs of photo and chrono aging
- Reduced turgor and elasticity
- Withering skin of the face, neck and décollete
- Pigmentation
- Skin dehydration from the sun or low temperatures
- Malfunction of sebaceous glands
- Signs of acne

Treatment areas:

- face
- neck
- décollete
- lower legs
- upper legs
- lateral surface of buttocks
- shoulder girdle
- anterior abdominal wall
- back of hand and back of foot



Benefits:

- Immediate skin moisturization
- Improvement of complexion
- Improves elasticity and tone of skin due to body's production of own collagen and elastin
- Wrinkles reduced
- Regulation of melanogenesis
- Face lifting
- Elimination of skin inflammation and improvement of sebaceous glands' function

Ingredients:

Each syringe contains 25 mg of non-stabilized Hyaluronic Acid



MESOHEAL PINK GLOW

Mesoheal PINK GLOW is an advanced whitening cocktail indicated to lighten hyperpigmented areas of the skin and prevent formation of new imperfections on the face and body.

Skin pigmentation is caused by the synthesis of melanin that produces melanosomes. The more melanosomes that reach the keratinocytes (the most abundant cells on the skin surface), the darker the skin becomes.

Mesoheal PINK GLOW effectively reduces the appearance of fine lines and facial wrinkles, making the skin more elastic by enhancing the synthesis of collagen, elastin, fibronectin and hyaluronic acid. The boost in collagen and elastin helps retain the skin's dermal structure which results in a reduction of the look of fine lines and the prevention of new wrinkles. The hyaluronic acid also facilitates in trapping moisture, which in turn hydrates the skin and prevents cracking.

The combination of active ingredients in Mesoheal PINK GLOW acts on the process of melanin production in order to achieve a depigmenting, lightening and balancing effect on the skin due to the synergistic and combined action of the active ingredients:

- 23 amino acids
- 13 vitamins
- 6 minerals
- 6 coenzymes
- 14 Peptides
- Glutathione
- Hyaluronic acid



PINK GLOW also reduces melanogenic factors, inhibits melanin synthesis and increases cell detoxification to improve the skin's natural brightness and water levels.

Powered by age-defying peptides, a blend of numerous vitamins and potent antioxidant agents, Mesoheal PINK GLOW helps to lighten hyperpigmented areas of the skin and improve skin firmness and elasticity.

Indications:

- Melasma (hyperpigmentation)
- Post-inflammatory hyperpigmentation
- Age spots
- Dehydrated skin
- Hormonal changes
- Excessive exposure to sunlight
- Acne-prone skin
- Rosacea
- Aponeurotic or senile ptosis
- Stretchmarks
- Smoker's skin

Recommended Course:

Mesotherapy treatment is carried out over a duration of three months which includes 7 treatment sessions in total. Each session takes up to 30 minutes.

- Session 1 : 4 treatments with an interval of 1 to 2 weeks.
- Session 2 : 2 treatments with a month interval.
- Session 3 : 1 treatment every 2 to 6 months.

The number of procedures and repetition course is subject to individual skin condition.

Benefits:

- Moisturizes & rejuvenates skin
- Depigments and brightens skin
- Controls spots formation
- Promotes skin radiance
- Nourishes and hydrates skin

Ingredients:

23 amino acids, 13 vitamins, 6 minerals, 6 coenzymes, 14 Peptides, glutathione, Non-stabilized hyaluronic acid.

Package
5ml x 10 vials

Storage
Store at room temperature below 25°C and avoid direct sunlight.



PLAGENTIC

The special composition of Plagentic is the placenta, which contains an abundant number of nutritional compounds that repairs damaged cells and rejuvenates the skin. This product is an all-natural and active placental substance that is preserved in the manufacturing process. There are noticeable immediate effects upon administration of Plagentic, such as rejuvenation of the skin, a stronger immune system and treatment of various skin conditions.

Indications:

- Atopic dermatitis (moderate and severe forms, including complex forms)
- Herpes recidivus
- Chronic hepatic disorders
- Drug, alcoholic and environmental intoxications
- Fatigue
- Insomnia
- Weak immune system
- Sexual dysfunction
- Dysfunction of pelvic organs
- Impairment of cerebral circulation, visual, hearing and memory
- Stress
- Trauma and surgery

Administration:

- Subcutaneously
- Pharmacopuncture
- Intramuscularly



Ingredients
2 ml Human Placenta Extract

Package
2 ml x 50 Ampoules/Box

Storage
Avoid direct sunlight and store at temperature not exceeding 30 °C

Plagentic is a unique concentrate of 100% highly-purified human placenta extract that can be used for a variety of medical and beauty treatments.

Use in Medicine:

- Stabilizes the activity of the nervous system, improves the condition of bones, muscles and heart, the damaged parts of the upper layers of the skin are restored, which contributes to the improvement of the collateral circulation
- Minerals and nutrients are more easily absorbed
- Antimutagenic agents prevent cancer cell formation
- Stimulates insulin production
- Boosts immune system
- Normalizes metabolic processes in the body
- Regulates the endocrine (hormonal) system
- Diseases associated with involuntary changes in the body are better controlled, especially diabetes and hypertension
- Tissue repair
- Stimulates thought activity, improvement of eyesight and increases vitality
- Recovery from fatigue and minimizes the impact of stressors

Use in Mesotherapy:

- Restores skin tone and elasticity
- Corrects gravitational ptosis, wrinkles
- Improves skin hydration
- Stimulates skin regeneration
- Slows down aging process
- Combats hyperpigmentation
- Calms sensitive skin prone to irritation
- Stimulates synthesis of hyaluronic acid, collagen and elastin
- Lifting effect
- Immediate repairing of skin after chemical peelings and laser procedures
- Prophylactic effect for the treatment of age-related changes in the skin
- Prepares and repairs skin that undergoes plastic surgery



VELANCIA COG

Velancia is a high-quality mesothread with an innovative way of tightening the skin on the face and body. The procedure itself is painless and effective. The principle is that an invisible skeleton is created in the skin, which provides excellent lifting while not limiting facial expression.

Indications:

- Eyebrow drooping
- Crow's feet around the eyes
- Glabellar frown lines
- Nasolabial folds
- Ptosis of cheeks and chin area
- Laxity of the skin on the chin, neck and chest
- Uneven skin after liposuction
- Folds in the ears

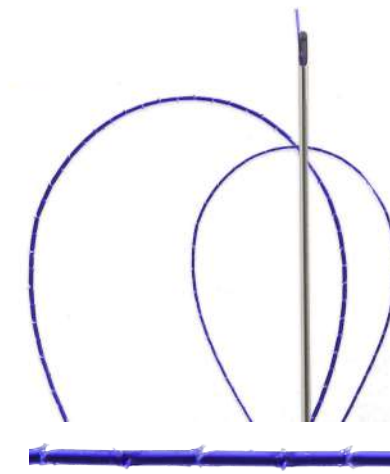


Package: 20 pcs/Box

Storage: Avoid direct sunlight, high temperatures and humidity.

Benefits:

- 100% biocompatibility with tissue
- No risk of allergic reaction
- Needles are thin and flexible
- Can be used with just a topical anesthetic
- Possibility of repeated injections
- Long lasting effect
- Short recovery period



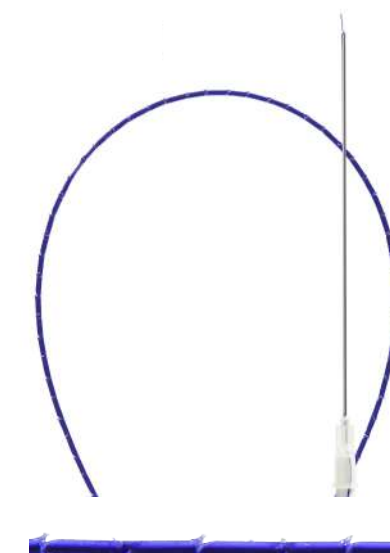
Uni-directional cog thread

PDO Type	Needle gauge & length (mm)	Thread length (mm)
Cannula 360 4D COG USP 1-0/3-0	19G/100 21G/100	150 150



Bi-directional cog thread

PDO Type	Needle gauge & length (mm)	Thread length (mm)
Cannula COG Bi-direction USP 1-0/3-0	19G/100 21G/100	150 150



Uni-directional cog thread

PDO Type	Needle gauge & length (mm)	Thread length (mm)
Sharp Needle Velancia 360 4D COG USP 1-0/3-0	19G/100 21G/100	150 150

Benefits:

- Rejuvenating effect lasts for 2 years
- Specially designed for patients who do not need extra volume on the face
- Due to incisions along the entire circumference, reliable fixation and double collagen production

Benefits:

- Powerful lifting effect
- Improvement of skin quality due to revitalization
- Double-pointed incisions form a three-dimensional framework, guaranteeing a long-term result

Benefits:

- Unsurpassed sharpness and elasticity for softer sliding in the subcutaneous layer
- The needle does not break through the dermal tissues, but slides them apart
- Rapid recovery with minimal traumatization of tissues



VELANCIA PRESS COG

VELANCIA PRESS COG thread is an innovative mesothread for lifting and tightening the skin, made with absorbable, bio-compatible materials - Polydioxanone (PDO) and Polycaprolactone (PCL).

Indications:

- Changes due to skin aging - gravitational ptosis, deep wrinkles
- Undefined facial contour
- Deep skin folds in the décollete zone
- Bulldog cheeks
- Severe nasolacrimal fissure
- Flabbiness of the skin on the abdomen, buttocks, legs and arms

Benefits:

- Absence of external incisions on ligature
- Due to its unique shape, can be used with a thinner needle
- Minimum damage to soft tissue
- Fast recovery after procedure
- No allergic reactions
- Increased strength, high resistance to tearing and stretching
- Prolonged effect, lifting can last for up to 2-3 years

Package: 10 pcs/Pouch

Storage:

Avoid direct sunlight, high temperatures and humidity.

Uniqueness of VELANCIA PRESS COG

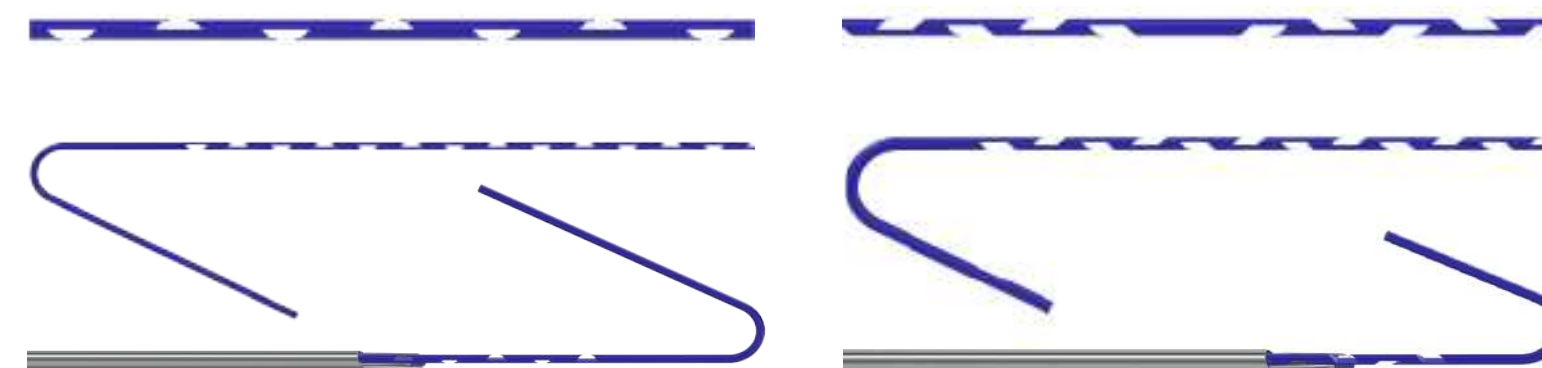
Due to its unique design a thicker thread can be used with a thinner needle

	Press COG Thread	Regular Thread
Needle size	Thread size	
18G	USP3 (0.60mm~0.699mm)	USP2 (0.50mm~0.599mm)
19G	USP3 (0.60mm~0.699mm)	USP0 (0.35mm~0.399mm)

Increased strength

	Batch Reference	Speed (mm/min)	Deflection at limit (mm)	Breaking load (N)
SLICE TYPE		100	50	32.23686718
PRESS COG		100	50	49.73893367

Two types of press cog threads:

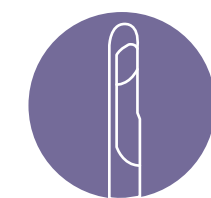


Double Sided Razor Wire Type

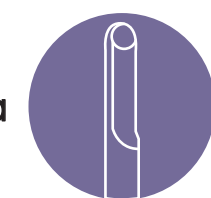
The main advantage of the double sided razor type thread is the ease of insertion of the threads and a fast wound healing process.

Double Sided Harpoon Type

The main advantage of the double sided harpoon wire type is its ability to fix to skin tissue more tightly than other cog threads.



W - cannula



L - cannula

TREATMENT AREAS

face (periorbital zone, brows, forehead, cheeks, upper lip, nosel and jawline), neck, chin area, abdomen, buttocks, legs and arms.



Type (PDO)	Needle gauge & length (mm)	Thread length (mm)
2 Side Razor Wire Type/W USP 3-0	19 G / 100	160 / 95
2 Side Harpoon Type/needle USP 2-0	23 G / 60	120 / 50

Type (PCL)	Needle gauge & length (mm)	Thread length (mm)
2 Side Razor Wire Type/2 Side Harpoon Type/W USP 3-0	18 G / 100	160 / 95
2 Side Harpoon Type/Needle USP 2-0	23 G / 60	120 / 50

VELVET DUAL LIFT THREAD

Velvet Dual Lift thread features a unique double needle for achieving a natural and immediate lifting effect in the desired area. It is made from a clear, absorbable material, which helps stimulate your skin's own collagen production. The thread is injected through a single injection site, which significantly reduces the damage to soft tissue.

Indications:

VELVET DUAL LIFT THREADS can be used anywhere on the face, neck and body to achieve a lifting, tightening and volumizing effect. Velvet threads are most effective for patients over 35 years old.

Treatment areas:



Instructions:



The areas to be treated are first numbered with a local anesthetic and then marked. Double needles are injected into identified points, then separated and moved further to the necessary layer. This helps to avoid damage of large vessels and nerves.

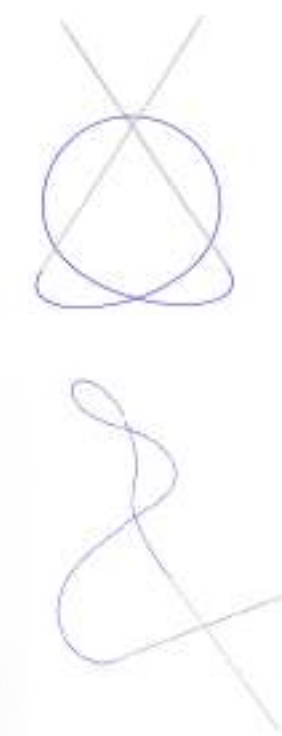
When the threads are injected they are strongly fixated within the skin tissue ensuring a lifting effect. These threads are not visible and not felt under the skin. The procedure together with the anesthesia will take approximately 40 minutes to an hour. One treatment per area is usually all that is required to achieve the desired effect, often with immediate visible results. The recovery process is short and complications are not common. A full recovery takes 10–14 days.

Package: 1 Pouch/1 ea

Storage:

Avoid direct sunlight, high temperatures and humidity.

Name	COG	Needle		Thread length
		Type	Needle gauge & length	MM
 PDO Double Needle	Cobra 180°	Straight Spatular	19G/110	290
	Cobra 180°	Straight Blunt	19G/110	290
	Cobra 180°	Straight Spatular	19G/110	440
	Cobra 180°	Straight Spatular	21G/110	480
 PLLA Double Needle	Slice 0°	Straight Spatular	19G/110	290
	Slice 0°	Straight Spatular	19G/110	440
	Slice 0°	Straight Blunt	19G/110	480
	Slice 0°	Straight Blunt	19G/110	600
	Slice 0°	Straight Blunt	21G/110	440



Benefits:

- Long-lasting lifting effect thanks to relocation of tissue in combination with a firm fixation point
- Armoring of tissue — skin induration and the removal of sagginess at the injection point
- Strengthening the ligaments thus preventing gravitational ptosis — formation of an extra SMAS level*
- Ability to dissolve within one year — they are replaced with connective tissue fibers which extends the lifting effect for up to 2 years
- Incisions on the thread ensure reliable lifting and perfect fixation to the facial tissue with a noticeable effect
- Extended shelf life up to 3 years due to a new vacuum packaging system

* SMAS (Superficial Musculo-Aponeurotic System) is a two-layer structure, the superficial fascia consisting of collagen and elastin fibers, as well as a layer of mimic muscles. These layers create a carcass supporting the skin. On one side, this structure is connected with soft tissue (skin and subcutaneous fat) and on the other side — by means of connective tissues and bands of the facial bones.

ANESTHETICS

Topical anesthetic creams are specially formulated to provide long-lasting pain relief and effective local anesthesia for various cosmetic dermatologic procedures. They are easy to apply, show high clinical effectiveness over a short time period, exert their effect on intact skin without systemic effects, and cause nominal pain or discomfort during treatment with minimal to no side effects.

Frost+ Cream 50g 20% Lidocaine Powerful Topical Numbing Cream

Benefits:

- Maximum lidocaine concentration (20%)
- Powerful and lasting pain relief
- Fastest onset of action
- Minimal to no side effects

LeedFrost Cream 500g 10.56% Lidocaine Premium Topical Numbing Cream

Benefits:

- High lidocaine concentration (10.56%)
- Quick pain relief
- Highly effective
- Minimal to no side effects
- Economical – up to 200 applications

LeedFrost Cream 50g 10.56% Lidocaine Premium Topical Numbing Cream

Benefits:

- High lidocaine concentration (10.56%)
- Quick pain relief
- Highly effective
- Minimal to no side effects
- Convenient and easy to use

Progelcaine 50g 9.6% Lidocaine Gel Topical Numbing Gel

Benefits:

- Optimum topical numbing gel (9.96%)
- Gel type
- No need to apply an occlusive bandage
- Quick vasoconstriction
- Suitable for use in sensitive areas
- Minimal to no side effects

INDICATIONS

- Injections (facial contouring, mesotherapy, biorevitalization, threadlifting)

- Permanent Makeup
- Depilation (laser/wax)
- Tattooing

- Piercing
- Removal of tattoos and permanent makeup

- Minor surgical procedures
- Micro-liposuction

Active Ingredient: Lidocaine – 200.0 mg
Other Ingredients: Methyl Paraben (1.5 mg)
Packaging: 50 g per tube

Active Ingredient: Lidocaine – 105.6 mg
Other ingredients: Methyl Paraben (1.5 mg)
Packaging: 500 g per tub

Active Ingredient: Lidocaine – 105.6 mg
Other ingredients: Methyl Paraben (1.5 mg)
Packaging: 50 g per tube

Active Ingredient: Lidocaine 96 mg
Packaging: 50 g per tube

Duration of Action: Up to 4 hours
Storage: Store at room temperature below 25°C and avoid direct sunlight



ANESTHETICS

Combination anesthetic creams offer effective pain alleviation that has been evaluated in numerous clinical trials. Combination options are associated with a very favorable profile because of their ease of use and mild side effects.

PRO FUSION Cream 500g 2.5% Lidocaine + 2.5% Prilocaine Local Anesthetics

Benefits:

- High clinical effectiveness
- Suitable for sensitive skin
- No adverse effects in case of combined anesthesia
- Minimal risk of allergic reactions
- Economical – up to 200 applications



INDICATIONS

- Injections (facial contouring, mesotherapy, biorevitalization, threadlifting)
- Permanent Makeup
- Depilation (laser/wax)

Active Ingredients: Lidocaine – 25 mg, Prilocaine – 25 mg

Other Ingredients: Methyl Paraben (0.35 mg),
Propylene Glycol (0.65 mg)

Pack Size: 500 g per tub

PRO FUSION 50g 2.5% Lidocaine + 2.5% Prilocaine Local Anesthetics

Benefits:

- High clinical effectiveness
- Suitable for sensitive skin
- No adverse effects in case of combined anesthesia
- Minimal risk of allergic reactions
- Convenient size



- Tattooing
- Piercing
- Removal of tattoos and permanent makeup
- Minor surgical procedures

Active Ingredients: Lidocaine – 25 mg, Prilocaine – 25 mg

Other ingredients: Methyl Paraben (0.35 mg),
Propylene Glycol (0.65 mg)

Pack Size: 50 g per tube

Duration of Action: Up to 3 hours

Storage: Store at room temperature below 25°C and avoid direct sunlight

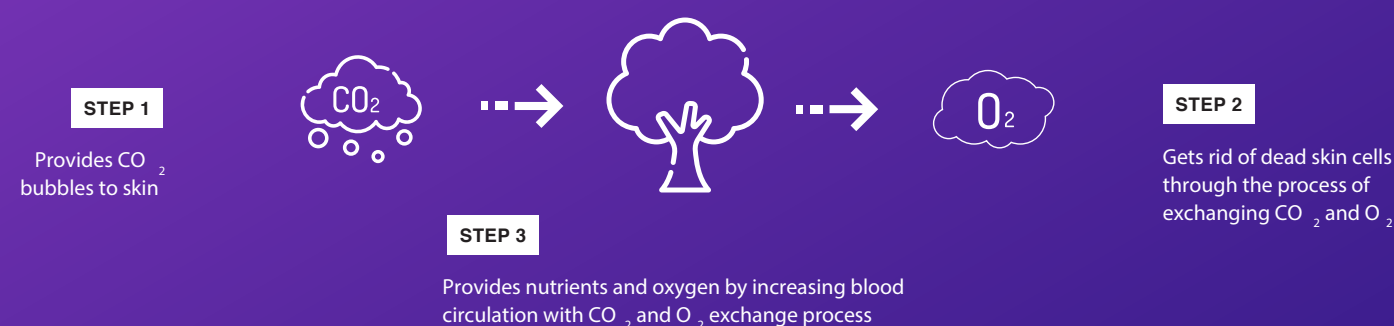
MASKS

CRYSTAL CARBOXY CO₂ GEL MASK

Crystal Carboxy CO₂ Gel Mask is an innovative facial mask that offers the benefits of carboxy therapy treatment without needles. It utilizes the BOHR effect and a new patent-pending, CO₂ Direct Delivery System (DDS) to enhance penetration of active ingredients into the subcutaneous skin tissue at a faster and deeper rate than other ordinary cosmetic applications.

- Needleless carboxy therapy
- Fast and effective absorption in 20 minutes
- Spa-salon techniques and results
- For both PROFESSIONAL and HOME use

HOW IT WORKS THE BOHR EFFECT



- Provides nutrients and oxygen to deep layers of skin via
 - Vasodilatation action
 - Anti-inflammatory action
 - Blood fluidity action
- Increases cell metabolism (turnover rate) and promotes waste removal and increased nutrients supply to the skin
- Improves skin elasticity, cell reproduction and skin barrier

CRYSTAL CARBOXY combines a specially formulated GEL with a dry cotton sheet MASK to produce CO₂ that gets transferred into the skin and increases cell metabolism, promoting a brighter and more even skin complexion after just one treatment (20 minutes).

Benefits:

- Face Slimming
- Whitening
- Wrinkle Reduction
- Face lifting
- Moisturizing
- Treatment of acne scars
- Reduction of pores

Ingredients:

Sodium Bicarbonate, Dipotassium Glycyrrhizate, Panthenol, Centella Asiatica Extract, Chamomilla Recutita (Matricaria) Flower Extract, Glycyrrhiza Glabra (Licorice) Root Extract, Camellia Sinensis Leaf Extract, Polygonum Cuspidatum Root Extract, Rosmarinus Officinalis (Rosemary) leaf Extract, Sodium Hyaluronate, Polyquaternium-51, Hydrolyzed Collagen

Instructions:

1. Clean your skin.
2. Apply gel from the syringe to your face evenly and use all at once. Avoid areas around eyes.
3. Attach mask sheet on face already applied with the gel, and press down lightly so that it can be evenly attached.
4. Remove the mask sheet after 20 minutes. Do not use more than 30 minutes as it may cause irritation.
5. Wipe off the residue with tissue paper and wash your face several times with lukewarm water.

Frequency of Use: 1-2 times per week.



Package

[Gel] 25ml x 5 prefilled syringes + [Mask] 5 sheets

Storage

Store at room temperature below 25°C and avoid direct sunlight.

Shelf Life

12 months

MASKS

GLOMEDIC AQUA PEPTIDE MODELING MASK

GLOMEDIC masks are based on an innovative technology where the ingredients are ground into ultra-microscopic pieces so that they can penetrate deeply into the skin instantly. The active ingredients can reach the dermis layer, which makes GLOMEDIC masks 10 times more effective than other masks*.

Instructions:

The powder of the alginate mask should be diluted with room temperature water (40 ml of powder – per 30 ml of water). If desired, increase the amount of powder and water. Apply the mask to the skin (layer of 3-5 mm) but do not cover up the nostrils. Take off the mask after 30 min., removing from the chin to the forehead. Use only 2-3 times per week.

Weight: 1000 g



Storage:

Avoid direct sunlight, high temperatures and humidity.

**Based on clinical trials conducted by Koru Pharmaceuticals with a sample of 478 females in the study.*



"Vitamin complex" GLOMEDIC masks work to improve skin complexion, boost skin elasticity and improve skin tone.

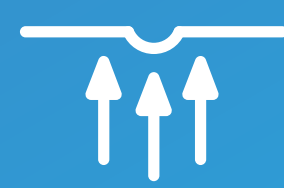
Masks	Benefits	Ingredients
Collagen Lifting	<ul style="list-style-type: none"> • Re-defines facial contour • Stimulates collagen synthesis • Strengthens skin cells • Reduces wrinkles 	Maltodextrin, Diatomaceous Earth, Zea Mays (Corn) Starch, Glucose, Algin, Calcium Sulfate, Tetrasodium Pyrophosphate, Sodium Benzoate, Phenoxyethanol, Silk Amino Acids, Copper Tripeptide-1, Hydrolyzed Collagen, Glycyrrhiza Glabra (Licorice) Root Extract, Centella Asiatica Extract, Allantoin, Dipotassium Glycyrrhizate, CI 77742, Fragrance
Brightening Whitening	<ul style="list-style-type: none"> • Smooths, moisturizes and detoxifies skin • Pearl extract brightens the skin • Increases elasticity • Instantly removes signs of fatigue and improves complexion. 	Maltodextrin, Diatomaceous Earth, Zea Mays (Corn) Starch, Glucose, Algin, Calcium Sulfate, Tetrasodium Pyrophosphate, Mica, Titanium Dioxide, Tin Oxide, Sodium Benzoate, Phenoxyethanol, Silk Amino Acids, Copper Tripeptide-1, Hydrolyzed Collagen, Niacinamide, Glycyrrhiza Glabra (Licorice) Root Extract, Pearl Extract, Allantoin, Dipotassium Glycyrrhizate, Fragrance
Cooling Pore Minimizing	<ul style="list-style-type: none"> • Cools, refreshes and tones the skin • Tightens pores • Reduces the production of sebum • Restores skin turgor 	Maltodextrin, Diatomaceous Earth, Zea Mays (Corn) Starch, Glucose, Algin, Calcium Sulfate, Tetrasodium Pyrophosphate, Sodium Benzoate, Phenoxyethanol, Silk Amino Acids, Copper Tripeptide-1, Hydrolyzed Collagen, Glycyrrhiza Glabra (Licorice) Root Extract, Mentha Piperita (Peppermint) Leaf Extract, Allantoin, Dipotassium Glycyrrhizate, CI 77007, Fragrance
Coenzyme Q10 Rejuvenation	<ul style="list-style-type: none"> • Boosts cellular renewal and skin regeneration • Decreases signs of aging • Provides anti-oxidant effects • Strengthens the skin 	Maltodextrin, Diatomaceous Earth, Zea Mays (Corn) Starch, Glucose, Algin, Calcium Sulfate, Tetrasodium Pyrophosphate, Mica, Titanium Dioxide, CI 77491, Sodium Benzoate, Phenoxyethanol, Silk Amino Acids, Copper Tripeptide-1, Hydrolyzed Collagen, Glycyrrhiza Glabra (Licorice) Root Extract, Allantoin, Colloidal Gold, Dipotassium Glycyrrhizate, Fragrance
Charcoal Purifying	<ul style="list-style-type: none"> • Cleans clogged pores and removes black heads • Antibacterial and anti-inflammatory effect • Improves skin texture and minimizes pores 	Maltodextrin, Diatomaceous Earth, Zea Mays (Corn) Starch, Glucose, Algin, Calcium Sulfate, Tetrasodium Pyrophosphate, Sodium Benzoate, Phenoxyethanol, Silk Amino Acids, Copper Tripeptide-1, Hydrolyzed Collagen, Charcoal Powder, Glycyrrhiza Glabra (Licorice) Root Extract, Allantoin, Dipotassium Glycyrrhizate, Fragrance

MESOHEAL MESOTHERAPY POST-TREATMENT CARE MASK

This ultra-fine microfiber sheet mask contains Hyaluronic Acid and β -GLUCAN, specially formulated to hydrate, soothe and repair dry, irritated skin for the ultimate aftercare following a mesotherapy treatment.

Indications:

- Increasing the effects of various mesotherapy treatments, such as Dermaroller and Dermapen micro-needling treatments
- Caring for redness, swelling and bruising after mesotherapy



MESOHEAL MESOTHERAPY POST-TREATMENT CARE MASK — an innovative, ultra-thin reinforcing mask

Instructions:

1. Cleanse and dry face thoroughly
2. Remove mask from packaging and apply to fit the contours of your face
3. Leave on for 20-30 minutes and then remove gently
4. Massage the remaining essence into face and neck
5. Enjoy your hydrated and glowing skin

Effects:

- Protects the skin from dryness and ensures optimal moisturization
- Protects the skin from scabbing
- Prevents swelling and bruising
- Promotes rapid healing, calms inflamed areas and evens out skin tone
- Protects skin from infections
- Balances skin oil
- Protects skin from formation of hyper-pigmentation

Ingredients:

Aqua, Butylene Glycol, Glycerin, Methyl Glucose-20, Beta-glucan, 1,2-Hexanediol, Phenoxyethanol, Sodium Hyaluronate, Acrylates / C10-30-(Alkyl) Acrylate Crosspolymer, Castor Wax PEG-60, Arginine, Ethylhexylglycerin, Xanthan Gum, Disodium EDTA, Perfume



Package

1 pc., 20 g

Storage

Avoid direct sunlight, high temperatures and humidity.

MASKS

AVALON BETA-GLUCAN LASER POST-TREATMENT HYDROGEL MASK

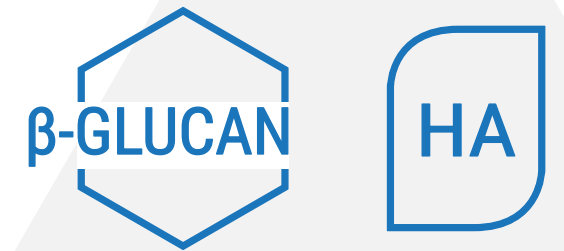
The effectiveness of a Laser Resurfacing treatment depends highly on the aftercare of the skin following the procedure. A facial mask is a great way to instantly boost the skin's ability to absorb and hold moisture for long-lasting hydration and helps prevent any unpleasant side effects from laser procedures. AVALON BETA-GLUCAN LASER POST-TREATMENT HYDROGEL MASK is an innovative facial mask with a specially developed formula to care for the skin following any laser treatment.

- Mask fits the face tightly, which improves product absorption
- Keeps the skin moist, helps prevent the formation of scabs and reduces the healing time of your skin
- Prevents the newly resurfaced skin from drying out after laser procedures
- Not only keeps the skin hydrated but also loosens and removes dead skin cells and skin debris to keep the surface of the skin clean
- Does not contain any parabens, sulfates or phthalates

Benefits:

- Improves skin condition immediately after laser therapy
- Lowering the risks of negative reactions of the body following a laser procedure
- Fast recovery of the skin after laser procedures
- Keeps the skin moist and prevents it from drying out
- Relieves irritation
- Accelerates healing process
- Removes dead cells, smoothing the surface of the skin

A luxurious hydrogel-based mask containing hyaluronic acid and beta-glucan (β -GLUCAN), specially formulated to hydrate and soothe the skin for the ultimate aftercare following a laser procedure.



Indications:

- To accelerate skin renewal after laser treatment
- To soothe skin after chemical peeling or during biorevitalization procedures
- Care of sensitive dull and irritated skin
- Care of vulnerable skin

Ingredients:

Water, Glycerin, 1,2-Hexanediol, Niacinamide, Ceratonia Siliqua Gum, Chondrus Crispus (Carrageenan) Extract, Beta-Glucan, Butylene Glycol, PEG-60 Hydrogenated Castor Oil, Sodium Hyaluronate, Allantoin, Oenothera Biennis (Evening Primrose) Oil, Adenosine, Disodium EDTA, Fragrance, Olea Europaea (Olive) Fruit Oil, Potassium Hydroxide

Instructions:

1. Cleanse and dry face thoroughly.
2. Remove mask from packaging, it comes in two parts (top & bottom) and apply to fit the contours of your face.
3. Leave on for 20-30 minutes and then remove gently.
4. Massage the remaining essence into face and neck.
5. Enjoy your glowing and hydrated skin.



Package

1 pc., 30 g

Storage

Avoid direct sunlight, high temperatures and humidity.

PRODUCTION & SUPPLY

SALES & MARKETING

Koru Pharmaceuticals Co., Ltd.

Address: 8F, 14-6, Teheran-ro 78-gil, Gangnam-gu, Seoul, Korea

Zip code: 06194

Mob: +82-10-7744-0914

Koru Global Sdn. Bhd.

Address: Suite 43A, Level 43, Vista Tower, The Intermark, 348 Jalan
Tun Razak, Kuala Lumpur, Malaysia

Zip code: 50400

Tel: +60-3-2181-4433

Mob: +82-10-7744-0914

E-mail: info@korupharma.com

Web: www.korupharma.com